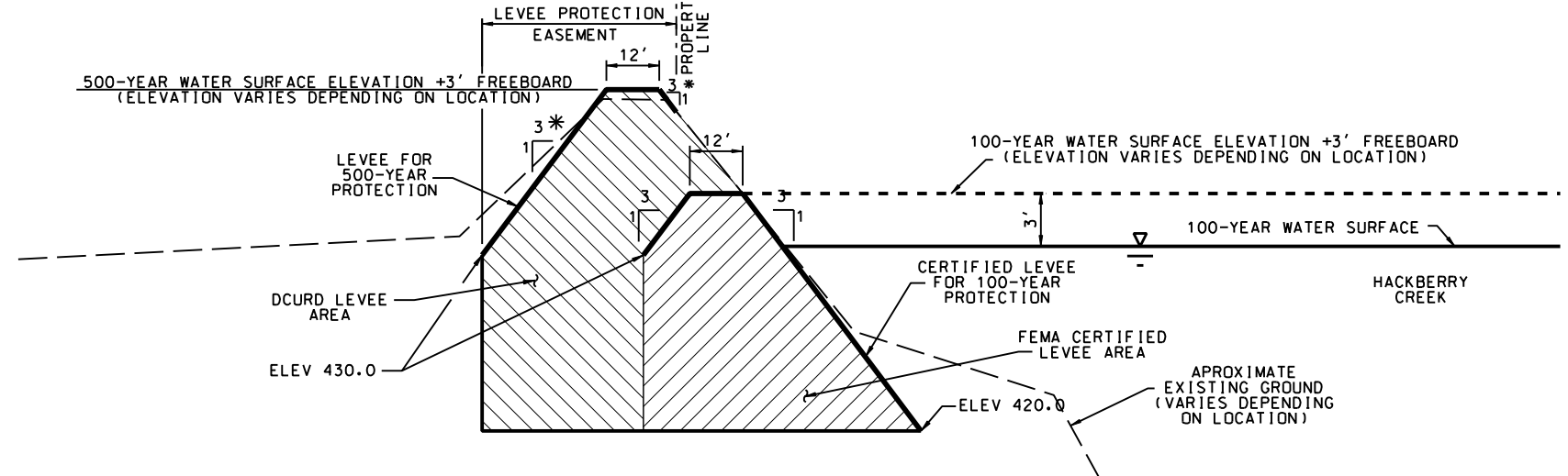
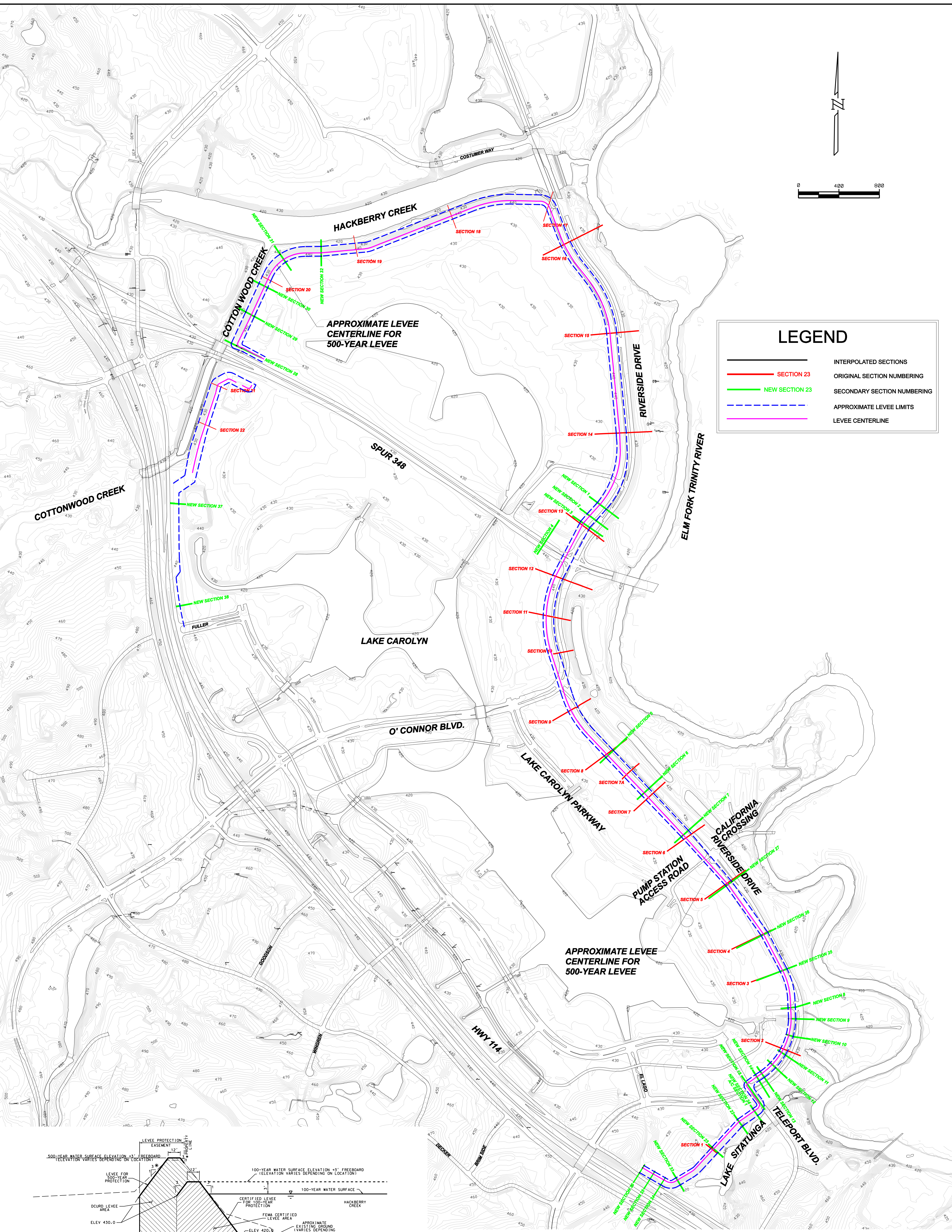
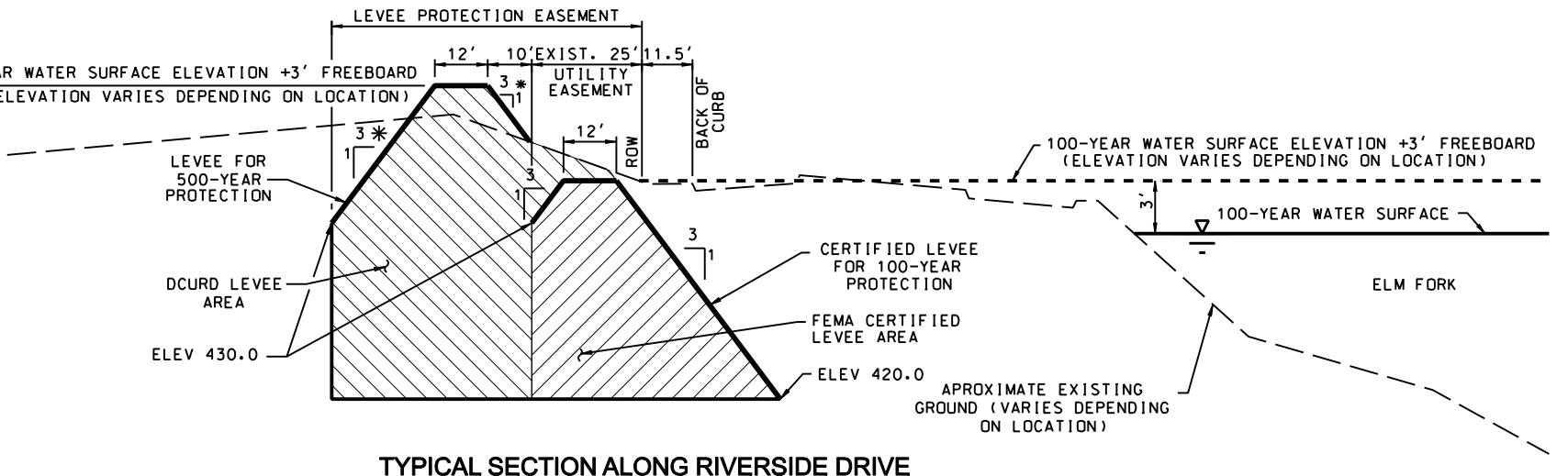


LEGEND	
	INTERPOLATED SECTIONS
	SECTION 23 ORIGINAL SECTION NUMBERING
	NEW SECTION 23 SECONDARY SECTION NUMBERING
	APPROXIMATE LEVEE LIMITS
	LEVEE CENTERLINE



TYPICAL SECTION NORTH OF SPUR 348



TYPICAL SECTION ALONG RIVERSIDE DRIVE SOUTH OF SPUR 348

DALLAS COUNTY UTILITY AND RECLAMATION DISTRICT

LAS COLINAS URBAN CENTER LEVEE STUDY

LEVEE CENTERLINE ALIGNMENT AND LEVEE LIMITS

JAN. 2010

JACOBS

60205 02-16-10

PRELIMINARY-REVIEW ONLY
 These documents are for Design Review and not intended for Construction, Bidding or Permit Purposes. They were prepared by, or under the supervision of:
 Burl L. Weatherbee 60205 02-16-10
 Type or Print Name PLS Date